



# JIAWIN

design for your own brand





### Our Service

3

### Our Process

4

(mascara)

Aluminum Tube

5

Makeup Tube

6

Stamp Pen (eyeliner)

7

(Lip gloss)

Thickness Bottle

8

Compact

9



Palette

10

Round Compact

11

Loose Powder Jar

12

Refillable

13

PET / PETG Bottle

14



#### ABOUT JIA WIN



Establishment:  
Since 2009, Tainan, Taiwan

Measurement:  
The total area covers 3000M<sup>2</sup>

Service:

- \* Cosmetics Packaging
- \* Turnkey Products
- \* Design Service

We devotes to provide the best services to all customers worldwide.

Core values and beliefs:

- \* Responsive
- \* Continuous Innovation
- \* A belief that honesty is always the best policy and that trust has to be earned.

Diversity · Originality · Quality & Service makes JIA WIN unique.

A well-structured Quality Management System in accordance with ISO 9001:2015.  
At JIA WIN quality is not a just hollow statement, it is our way of life and our responsibility.

JIA WIN will be your best partner.

# OUR SERVICE

PACKAGING

TURNKEY PRODUCTS

DESIGN SERVICE

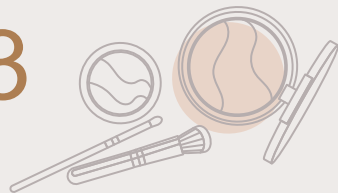
## ODM

- \* Your idea, concept& brand
- \* We drawing, prototype& tools
- \* We manufacture

## OEM

- \* Our standard components
- \* Your brand
- \* We manufacture

03



Inquiry

1

Quotation

2

Specification finalized

3

Sample Submit

4

Contract/Order

5

PPS Submit

6

Production

7

IQC/PQC/FQC

8

Delivery

9

OUR PROCESS



JIWIN  
design for your own brand

04



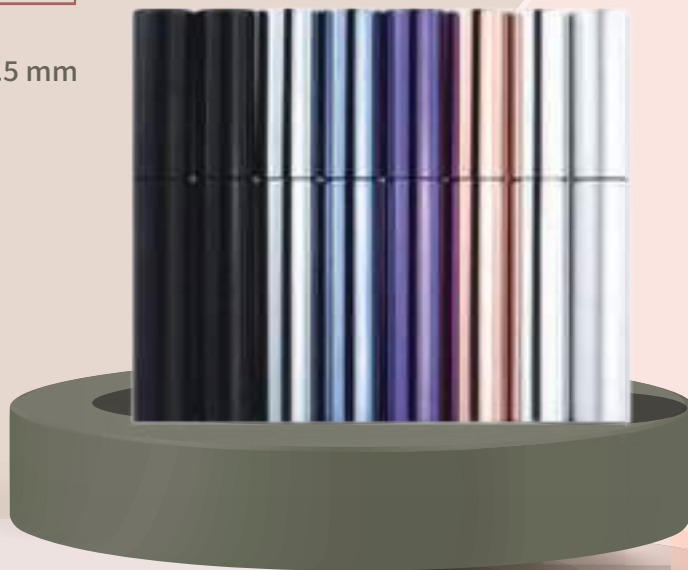
# 05 ALUMINUM TUBE

## MASCARA



Dimensions : (D)17 x (H)112.5 mm  
Capacity : 8.8 ml

Materials :  
Outer : Aluminum  
Inner Bottle : PETG  
Cap : Aluminum  
Wand : POM / PP  
Wiper : TPE / PE



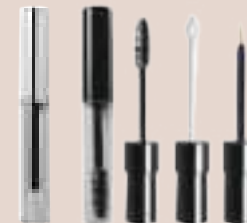
# Makeup Tube

decos & treatments

\*Silk Screen Printing \*Hot Stamping \*Spray Coating

\*Metallization \*Labels \*Film Transfer

\*Water Transfer \*Deboss / Emboss Logo



— PEM series  
— PLG series  
— PEL series

Cap : ABS / Aluminum  
Wand : POM / PP  
Bottle : PETG  
Wiper : TPE / PE



Double-end tube

— PEM-007DUO

Dimensions : (D)12.5 x (H)126.7mm  
Capacity : 3ml each  
Materials :  
Cap : Aluminum  
Wand : POM / PP  
Bottle : PETG / PP  
Wiper : TPE / PE

# Makeup Tube 06

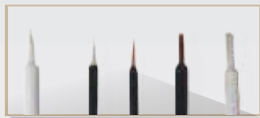
MASCARA

# Eye Liner STAMP PEN 07

PEL-009



Dimension: (D)16 x (H)108 mm  
Capacity: 9 ml  
Material:  
Cap: Aluminum  
Wand: POM  
Bottle: PETG  
Wiper: TPE



PEL-028

Dimension: (D)17.5 x (H)67.5 mm  
Capacity: 4 ml  
Material:  
Cap: ABS  
Wand: POM  
Bottle: PETG  
Wiper: TPE

PES-006-1

Dimension : (D)9.6 x (H)124 mm  
Capacity : 2 ml  
Material :  
Cap : PP  
Body : PP  
Head : PP  
Stamp/ Eyeliner: PE  
Inside core : Nylon fiber



decos & treatments

\*Silk Screen Printing \*Hot Stamping \*Spray Coating

\*Metallization \*Labels \*Film Transfer

\*Water Transfer \*Deboss / Emboss Logo

# LIP GLOSS

## THICKNESS BOTTLE

PLG-035

Dimension : (D)16.5 x (H)108.5 mm  
Capacity : 3.5 ml  
Material :  
Cap : ALUMINUM  
Bottle : AS  
Wand : POM / PP  
Wiper : TPE



PLG-217

Dimension: (L)17.8 x (W)17.8 x (H)116.2 mm  
Capacity : 8ml  
Material :  
Cap : ABS  
Bottle : PETG  
Collar : ABS  
Wand : POM/ PP  
Wiper : TPE/ PE



# COMPACT

COMPACT, VERSATILE, LIGHTWEIGHT  
REACH Annex XIV SVHC& REACH Annex XVII certified

PCS-179 / PCS-179W

- Lid : ABS
- Window : AS
- Inner : ABS
- Base : ABS
- Dimensions : (L)159x (W)101x (TH)11.5mm
- Lid with a mirror available



- Inner type :
- 6R- 6 Round wells  
Inner size : (D)35.6 x (H)4.6mm
  - 8R- 8 Round wells with applicator space  
Inner size : (D)32.3 x (H)4.9mm
  - 8RF- 8 Round wells (Refillable)  
Magnetic will be provided.  
Inner size : (D)30.3 x (H)4.9mm
  - 12S- 12 square wells with applicator space  
Inner size : (L)20.3 x (W)20.3 x (H)3mm

PCS-005-1

- Dimensions : (L)70 x (W)70 x (TH)14.2mm  
Inner type :
- A- 4 Square wells with applicator space
  - B- 1 Round well
  - C- 1 Square well
  - D- 1 rectangle well with applicator space
  - Lid with a mirror available
  - Transparent lid available
  - Customize inner available
  - EVA inner or PS vacuum form inner available

Materials:  
Lid : ABS  
Inner : ABS  
Base : ABS

decos & treatments

\*Silk Screen Printing \*Hot Stamping \*Spray Coating \*Metallization \*Labels \*Film Transfer

\*Water Transfer \*Deboss / Emboss Logo

09



1 PCS-241

- Dimensions : (L)230 x (W)152 x (TH)11.0mm  
Inner type : EVA or PS vacuum form  
- Customize inner available  
- with a magnetic pad available

2 PCS-247

- Dimensions : (L)230 x (W)102 x (TH)11.6mm  
Inner type : EVA or PS vacuum form  
- Customize inner available  
- with a magnetic pad available

3 PCS-006-1

- Dimensions : (L)100 x (W)100 x (TH)14.2mm  
- Lid with a mirror available  
- Transparent lid available  
- Customize inner available  
- EVA inner or PS vacuum form inner available

Materials:  
Lid : ABS  
Base : ABS

1

Materials:  
Lid : ABS  
Base : ABS

2

3

Materials:  
Lid : ABS / AS  
Inner : ABS  
Base : ABS

10

PALETTE

11

PCR-162

Dimensions : (D)45.5 x (H)12.5 mm  
Inner : (D)26.95 mm  
(fits 26.50 mm godet)  
Materials : AS / ABS



PCR-178

Dimensions : (D)72.4 x (H)23.60 mm  
Inner : (D)53.70 mm  
Materials : AS / ABS



ROUND  
COMPACT



PCR-004

Dimensions : (D)74.0 x (H)12.63 mm  
Inner : (D)59.95 mm  
(fits 59.0 mm godet)  
Materials : AS / ABS

PCS-279



PFJ-129 (window lid)

(Ø)37.5 x (H)22.5 mm 3 ml / 5ml  
(Ø)50.5 x (H)21.0 mm 10 ml  
(Ø)58.0 x (H)28.5 mm 20 ml  
(Ø)69.5 x (H)31.0 mm 30 ml

Jar : AS  
Window : AS  
Rim : ABS  
Sifter : PP



PFJ-130

(Ø)37.5 x (H)22.5 mm 3 ml / 5 ml  
(Ø)50.5 x (H)21.0 mm 10 ml  
(Ø)58.0 x (H)28.5 mm 20 ml  
(Ø)69.5 x (H)31.0 mm 30 ml

Jar : AS  
Cap : ABS  
Sifter : PP

LOOSE POWDER JAR

decos & treatments

- Silk Screen Printing
- Hot Stamping
- Spray Coating
- Metallization
- Labels
- Film Transfer
- Deboss / Emboss Logo

12

# Refillable

Refill / Reuse / Recycle

- decos & treatments
- Silk Screen Printing
  - Hot Stamping
  - Spray Coating
  - Metallization
  - Labels
  - Film Transfer
  - Deboss / Emboss Logo

## 1 — PFJ-204 CREAM JAR

※Aluminum Foil Sealing Sticker is available for Refill.

30g |  
(Ø)58.2 x (H)50 mm  
50g |  
(Ø)65.0 x (H)52.75 mm

Materials :  
Cap : ABS  
Jar : PMMA  
Inner Cup : PP  
Disc : PE

## 2 — PFP-241 AIRLESS BOTTLE

30ml /  
(Ø)44.0 x (H)149 mm  
50ml /  
(Ø)44.0 x (H)167 mm

Materials :  
Cap : ABS  
Outer Bottle : PMMA  
Inner Bottle : PP  
Pump : PP  
Collar : ABS



13

# PET·PETG BOTTLE

14



Mist Spray Pump Dosage : 0.16 cc    Lotion Pump Dosage : 0.20 cc    Trigger Pump Dosage : 0.25 cc    Flip Cap

### Neck Size

### Capacity (OF)

18/410	20ml / 30ml (Trigger Pump not available)
18/415	20ml (Trigger Pump not available)
20/410	30ml / 50ml / 75ml / 100ml / 120ml
24/410	50ml / 75ml / 100ml / 120ml / 250ml / 500ml
28/410	1000ml (Mist Spray Pump not available)

decos & treatments

- Silk Screen Printing
- Hot Stamping
- Spray Coating
- Metallization
- Labels
- Film Transfer

※ Standard Color of Bottle : transparent and white. Specific color is possible.